

Friends of...

MOOR POND WOODS

PROJECT EVALUATION REPORT

GRANGE COTTAGES SLUICE - MOOR POND WOODS

(OH-12-10503)

(2014-2017)



Supported by

The National Lottery[®]
through the Heritage Lottery Fund



Approved purposes

Work with volunteers to uncover, conserve and interpret archaeology at Grange Cottage Woods

We have successfully achieved this purpose. We have completed the excavation of the sluice structure, and explored the ponds and leat with test pits. We stabilised and conserved the stonework, improved access to the site, and have erected an information panel. A large number of glass and pottery artefacts were collected, washed and catalogued by volunteers, and most have been identified and dated by a local expert/volunteer.

Deliver training to the members of the Friends and local community in order to build enthusiasm, skills and capacity

We have held regular open-access work-days on site, providing appropriate skills training. We delivered themed training in surveying, excavation techniques, 'finds' management, stonemasonry and use of lime mortar for building. We also provided training with volunteers as we identified, mapped and photographed additional potential features within the project area.

Deliver outreach activities to engage the local community and build the capacity of the Friends

We have undertaken a programme of activities – three open weekends (July 2014, July 2015, July 2016) in the national CBA 'Festival of Archaeology' series; celebration day events showcasing phases of the project (in March 2015, March 2016 and March 2017); over the 4 years we have been represented at events like the University of Nottingham Archaeology Festival (twice), Hucknall Heritage Festival (once), Greasley Festival (once) Sherwood Forest Festival (once). There have been frequent illustrated talks presented to several local groups – Rotary clubs, Probus clubs, Women's Institute groups, heritage and local history societies. We have organised twice-yearly guided walks through the site and occasional guided walks for specific groups. These have been in addition to the training events, and volunteering days offered to DofE participants, local scouts, corporate volunteering parties, and work with the Leen Valley and Erewash Conservation Volunteers.

Develop interpretation including display boards, an exhibition and resource pack for use with schools

We have worked with a graphic artist to refresh our information leaflets, create a self-guided trail (with leaflet), 'Welcome Boards' at the main entrances to the site, and information panels at three key locations. We have purchased display boards and created exhibition posters, which have been used at many of the events listed above. We created an 'end-of-project brochure' which was distributed to most houses within easy walking distance of the site (along with the group information and trail guide). We have created and delivered bespoke learning activities and visits for primary school pupils at three local schools. We created a resource pack of historical documents and sources which has been used at our local secondary school.

Work with a range of relevant organisations and partners in order to deliver activities, events and training

We have worked in partnership with the County Council Conservation and Green Estates teams, Greenwood Community Forest, Friends of Greenwood group, Hucknall Health Walks Group. We undertook a joint promotion with our local brewery to brew and market a celebration beer called 'The Papplewick Hogshead' at local pubs, each drink purchased was served with an information card highlighting an aspect of the history of our site. We worked with our two local tea-rooms to offer 'guided walk and tea' events this year.

Events

We held a number of special events during the period of the project.

12th / 13th July 2014

We held a 2 day open event for National Archaeology Week in Grange Cottages Wood, Papplewick. A large trench was excavated by machine, and volunteers sieved spoil before cleaning and sorting artefacts (mainly glass and pottery fragments). Information stand erected and manned all weekend.

11th / 12th July 2015

We held a 2 day open event for National Archaeology Week. A trial trench was excavated by volunteers in the floor of the leat near Papplewick Lane. An information stand was erected nearby and manned all weekend (in Grange Cottages wood).

31st October 2015

An event was held at Papplewick Village Hall to celebrate commissioning the new bridge in Dam Banks, and to showcase progress on the project. There was an 'opening ceremony' on the bridge attended by the Borough Mayor, with refreshments and an exhibition in the Hall.

10th July 2016

We organised an open event for National Archaeology Week. The trial trench in the floor of the leat near Papplewick Lane was reopened and extended by volunteers. An information stand was erected nearby.

17th, 18th and 19th March 2017

We organised a weekend of celebration to conclude the main work of the project. There was a barn-dance on Friday evening. Following that, there was an 'open day' event on Saturday morning at the Village Hall, with events around the project area to view the welcome boards and interpretation panels, and an exhibition in the hall. On the Sunday we conducted advertised walking tours showcasing the history of the site and the work which has been carried out. The *Lincoln Green brewery* created a celebration beer, '*The Papplewick Hogshead*', which was on sale in local pubs over that weekend. Each drink purchased was served with an information card highlighting an aspect of the project.

Outcomes

We have successfully delivered the planned outcomes of the project.

1. Reports, maps, drawings and images which have been generated since the project began in 2000 have been collated, evaluated and catalogued, ready for publication. The images library is ready to be lodged with the Nottinghamshire HER Officer, for reference.
2. We have investigated the mill water system, providing much more information about the day-to-day operation of the mills. Additionally, the archaeological research has been incorporated within a PhD thesis successfully submitted to the University of Nottingham by one of our members. It has been made available to the academic community through the 'e-theses' service at the University of Nottingham, and hard copies were lodged at the Nottinghamshire Archives and County HER Office
3. The group have improved their capacity to undertake future work by providing training for volunteers. This has included
 - Archive Research skills
 - Awareness of methodology for conserving and cataloguing artefacts.
 - Archaeological fieldwork skills, like excavation, surveying and recording.
 - Working with lime-mortar and using basic stone-masonry techniques.
4. We have established connections within the community, boosting footfall within the project. There have been regular updates of information in Papplewick Parish Council's periodic newsletter (Jul 2015, Oct 2015, April 2016, Oct 2016, March 2017, May 2017) and through the pages of the bi-monthly 'Ravenshead News'. Talks have been given to a variety of local and regional organisations—for example, 4 different WI groups, 2 different 'Rotary Club' groups, 2 different 'Probus Club' groups, University of Nottingham, 3 different U3A groups, and to several Local History Societies in Nottinghamshire.
5. We have created a portable display, with eye-catching posters, showcasing various aspects of the project, and these have been exhibited at local events and during talks.
6. We have provided periodic guided walks through the project area, highlighting the work being carried out.
7. We created a 'celebration booklet' to mark the conclusion of the project (March 2017). This was distributed to all households in the parish, and surrounding streets and to local libraries. Additional copies were also widely distributed to houses in south-east Hucknall, within a mile radius of the site.
8. We have taken the opportunity to update our 'Friends' information leaflet, with cleaner style and up-to-date information. This has been widely distributed locally, including to households, in libraries, information centres and at events.
9. We have created a walking trail, in association with local businesses (Papplewick tea-room, Horse & Groom (Linby), Griffin's Head (Papplewick and Station Hotel (Hucknall)), A trail leaflet has been produced and widely distributed, with additional copies in the businesses.
10. We have undertaken an audit of all the archaeological work carried out since 2000, and surveyed the site to identify additional 'sites of interest'. This information continues to inform planning of future work and priorities. This was most recently discussed at an open meeting of the 'Friends' in March 2017, and will be updated annually.

Outputs

The lasting legacy of the project will be.

1. The stonework of the **Grange Cottages sluice** has been explored, surveyed, recorded and conserved.
2. The archaeology of the former **Grange Cottages East Pond** has been investigated and re-landscaped.
3. The site of **Grange Cottages sluice** is now served with surfaced paths and ramps, allowing accessibility for a range of visitors.
3. The archaeology of the former pond and possible sluice at **Dam Banks** have been investigated and landscaped. We have installed a bridge to highlight the position and significance of the channels.
4. The floor of the leat which approaches Papplewick Lane from the north has been investigated, exposing stone work which was hitherto unknown. The original shape and depth of the leat has been preserved. A bridge has been installed which will (in time) provide a viewing platform for the stonework.
5. A gateway feature has been created around the entrances to the project area from Papplewick Lane, marked with 'welcome boards' showing the project area, paths and entrances.
6. Three interpretation panels have been installed around the 'Papplewick Lane gateway' to give on-site information for visitors at the brick shaft, wall feature and Grange Cottages sluice.
7. The 'Friends of Moor Pond Woods' website has been re-launched, using WordPress software. It now provides up-to-date information. The more user-friendly editing means that it can be easily maintained and updated.
8. Project reports have been completed for all the archaeological work undertaken so far, and made available on the 'Friends' website.

Publications.

Reports

Binns, Laura, *Dam Banks South Sluice Pond, Moor Pond Woods, Papplewick* (Nottingham: Trent & Peak Archaeology Unit, 2015)

Binns, Laura, *Grange Cottages Pond, Moor Pond Woods, Papplewick* (Nottingham: Trent & Peak Archaeology Unit, 2015)

Binns, Laura, *Grange Cottage Sluice, Moor Pond Woods, Papplewick* (Nottingham: Trent & Peak Archaeology Unit, 2015)

Binns, Laura, *Moor Pond Woods, Papplewick, Nottinghamshire: Report on an Archaeological Audit and an Appraisal of Future Archaeological Investigation* (Nottingham: Trent & Peak Archaeology Unit, 2017)

Townsend, Rachel, *Papplewick Moor Pond Sluice Survey* (Nottingham: Trent & Peak Archaeology Unit, 2015)

Walker, Stephen, *Moor Pond Woods Project Report: Dam Banks East Sluice Excavation, Phase 1* (Nottingham: Friends of Moor Pond Woods, 2014)

Walker, Stephen, *Moor Pond Woods Project Report: The Dam Banks Ponds* (Nottingham: Friends of Moor Pond Woods, 2014)

Walker, Stephen, *Moor Pond Woods Project: Grange Cottages Wood Sluice, Interim Report* (Nottingham: Friends of Moor Pond Woods, 2015)


Walker, Stephen, *Moor Pond Woods: Grange Cottages East Pond, Interim Report* (Nottingham: Friends of Moor Pond Woods, 2015)

Leaflets

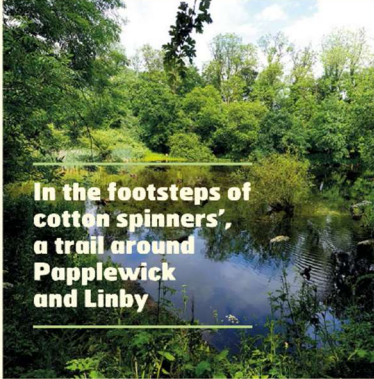
Booklet celebrating conclusion of the 2014-2017 HLF project.

'The Friends of Moor Pond Woods' 3-fold information leaflet

'In the footsteps of cotton spinners : A trail around Linby and Papplewick'




The Papplewick Trail
MOOR POND WOODS



In the footsteps of cotton spinners', a trail around Papplewick and Linby

Supported by **The National Lottery** through the Heritage Lottery Fund



The Moor Pond Woods Project



CONTENTS		HLF CELEBRATION NEWSLETTER	
Introduction	2	<p>Introduction</p> <p>As Chairman of the 'Project Steering Group' I am delighted that we are able to celebrate the hard work that has taken place in our community. We were awarded the Heritage Lottery Fund (HLF) grant in 2014, and have made remarkable progress. We received £29,200 to allow us to carry out archaeological exploration, to conserve and enhance the stonework found at the Grange Cottages site, to develop onsite and web-based interpretation and to celebrate the project in the local community.</p> <p>Read about what we have done in the last three years. I warmly invite you to join the group — so that the next few years can be as productive.</p> <p>Stephen Walker</p>	<p>There will be an 'Open Day' on Saturday, 18th March 2017 in The Bradbury Suite at the Papplewick and Linby Village Hall. From 10:00am until 5:00pm you can view a display of photographs and maps, showing work that has been undertaken on the project. Refreshments will be available. There will be a brief celebration ceremony at 10:30. There will also be an opportunity to take a guided tour of new work at 12:00 or 2:00pm. Come and find out more about the history of the project area, and see the work that has been completed so far.</p>
The HLF project	4		
Interpretation	6		
How to get involved	8	 <p><i>"We congratulate the group on past achievements, and wish you every success in the future."</i></p> <p>Clr Stef Roberts, Chairman of Papplewick Parish Council</p>	
			<p>Supported by The National Lottery through the Heritage Lottery Fund</p> 

Summary of Expenditure

Grange Cottages Sluice - Moor Pond Woods (OH)
Project Reference Number - OH-12-10503

MPW Code	HLF Cost Heading	MPW task Description	Total Expenses	Total Budget Allocated	Remaining Funds	
					£	%
a	Professional Fees	Archaeologists, teachers, researchers	12,931.99	13,000.00	68.01	1%
b	Repair and conservation work	Conservation of archaeology, forestry & ground clearance	1,878.51	1,900.00	21.49	1%
c	New build work	Paths, steps & fences	3,961.82	4,000.00	38.18	1%
d	Digital outputs	Creation of QR codes & linked web pages,	200.00	200.00	-	0%
e	Equipment and materials	Path materials, equipment (eg:PPE for workers)	1,008.14	1,050.00	41.86	4%
f	Training for volunteers	Training costs - hiring trainers, venues etc	96.00	110.00	14.00	13%
g	Travel for volunteers	Travel to training & research venues	647.48	660.00	12.52	2%
h	Expenses for volunteers	Refreshments	51.99	80.00	28.01	35%
i	Cost of producing learning materials	Education pack, interpretation panels	4,331.01	4,500.00	168.99	4%
j	Other	Postage, phone, consumables	168.54	200.00	31.46	16%
k	Publicity and promotion	Display boards, display material, event costs	3,459.28	3,500.00	40.72	1%
l	Contingency	Based on 6% of costs	-		-	
m	Inflation	Estimated at 2%	-		-	
TOTAL			28,734.76	29,200.00	465.24	2%



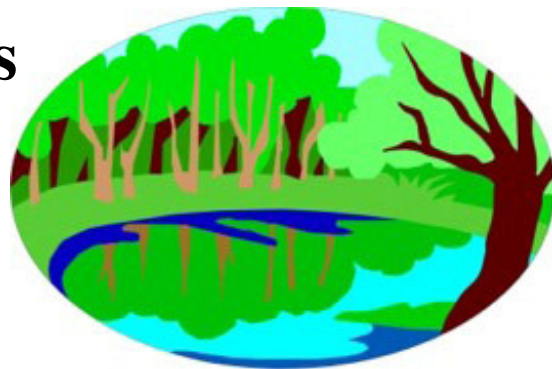
Rob
Kerr

Moor Pond Woods

26/02/2018

Friends of Moor Pond Woods

Invite you to
**Local History morning and
milestone celebration**



The Bradbury Suite, Papplewick Village Hall 10:00 until 12:30. Saturday 31st October 2015

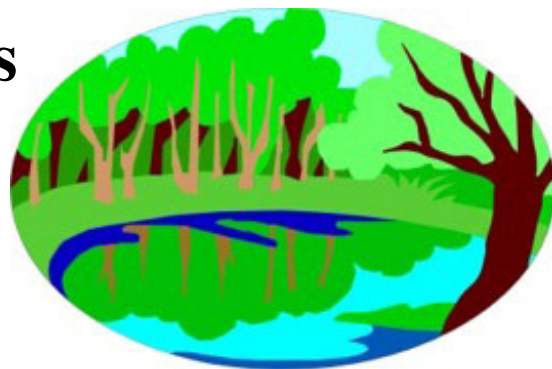


- Discuss our local history project.
- Find out about what we have carried out so far.
- Tour of the work (if fine)
- Refreshments available. All welcome.

For more information contact **Stephen Walker**
mpw@papplewick.org

Friends of Moor Pond Woods

Invite you to
**Local History morning and
milestone celebration**



The Bradbury Suite, Papplewick Village Hall 10:00 until 12:30. Saturday 31st October 2015



- Discuss our local history project.
- Find out about what we have carried out so far.
- Tour of the work (if fine)
- Refreshments available. All welcome.

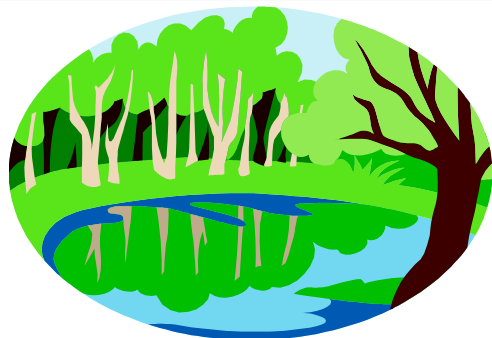
For more information contact **Stephen Walker**
mpw@papplewick.org



Supported by

The National Lottery[®]

through the Heritage Lottery Fund



Friends of Moor Pond Woods

17th to 19th March 2017

Weekend of Celebration

Friday 17th March—Jive Night

Saturday 18th March : Local History Day—Village Hall—10am to 5pm

Programme on the website

Sunday 19th March : Walking festival—Walk the new trails

In association with :

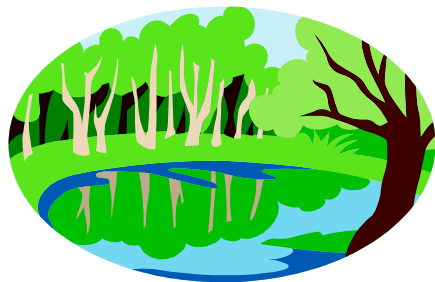
Griffin's Head, Papplewick : Horse & Groom, Linby :

Morton's Farm tearoom : Station Hotel , Hucknall

See our webpages for more information

<http://moorpond.papplewick.org>

Celebration beer from
Lincoln Green Brewery
will be available



Friends of Moor Pond Woods

Friday, 17th March 2017

Papplewick & Linby Village Hall

(Linby Lane, Papplewick)

7.00 for 7.30 pm start

MODERN JIVE NIGHT

Pie & Pea supper
(with Veggie option)

To reserve vegetarian option contact
Mrs M. Barker 0115 963 2057



Ticket

£10



Grange Cottages Sluice, Papplewick - excavation completed - February 2015



Grange Cottages Sluice, Papplewick – National Archaeology Week event - July 2015



Papplewick Lane leat, Papplewick – National Archaeology Week excavation - July 2015



Grange Cottages Sluice, Papplewick – Consolidation underway - August 2015



Grange Cottages Sluice, Papplewick – Construction of ramped access - Summer 2016



Dam Banks Sluice, Papplewick – new bridge across the leat – March 2017



Grange Cottages Sluice, Papplewick – consolidation completed – March 2017